

# Spare Parts List for Type 3271/3277 (120 cm<sup>2</sup>)



## Your contact details:

Title:

Name:

Company:

Customer no.

Street:

ZIP/postal code, city:

Country:

E-mail:

Phone:

## Ordering spare parts

The spare parts for Type 3271/3277 are listed on the next pages. This document can also be used for ordering:

1. Fill in your contact data and information on the product.
2. Enter the quantity of spare parts needed.
3. Click [Send form] button to attach the PDF form to an e-mail.
4. Attach additional information (e.g. invoice, photos) to the e-mail, if necessary.
5. Send e-mail to spareparts@samsongroup.com.

Either

Configuration ID (Var-ID):

or

SAMSON order no.:

Position in order:

or

1	Type number	13	Fail-safe action
2	Model	14	Manual override
4	Serial number	15	Special marking
5	Actuator area	16	Date of manufacture
6 and 7	Bench range in bar and psi		Operating medium
8	Operating travel in mm		Diaphragm material
9 and 10	Operating range in bar and psi		Connecting thread
11 and 12	Permissible supply pressure pmax in bar or psi		

Send form

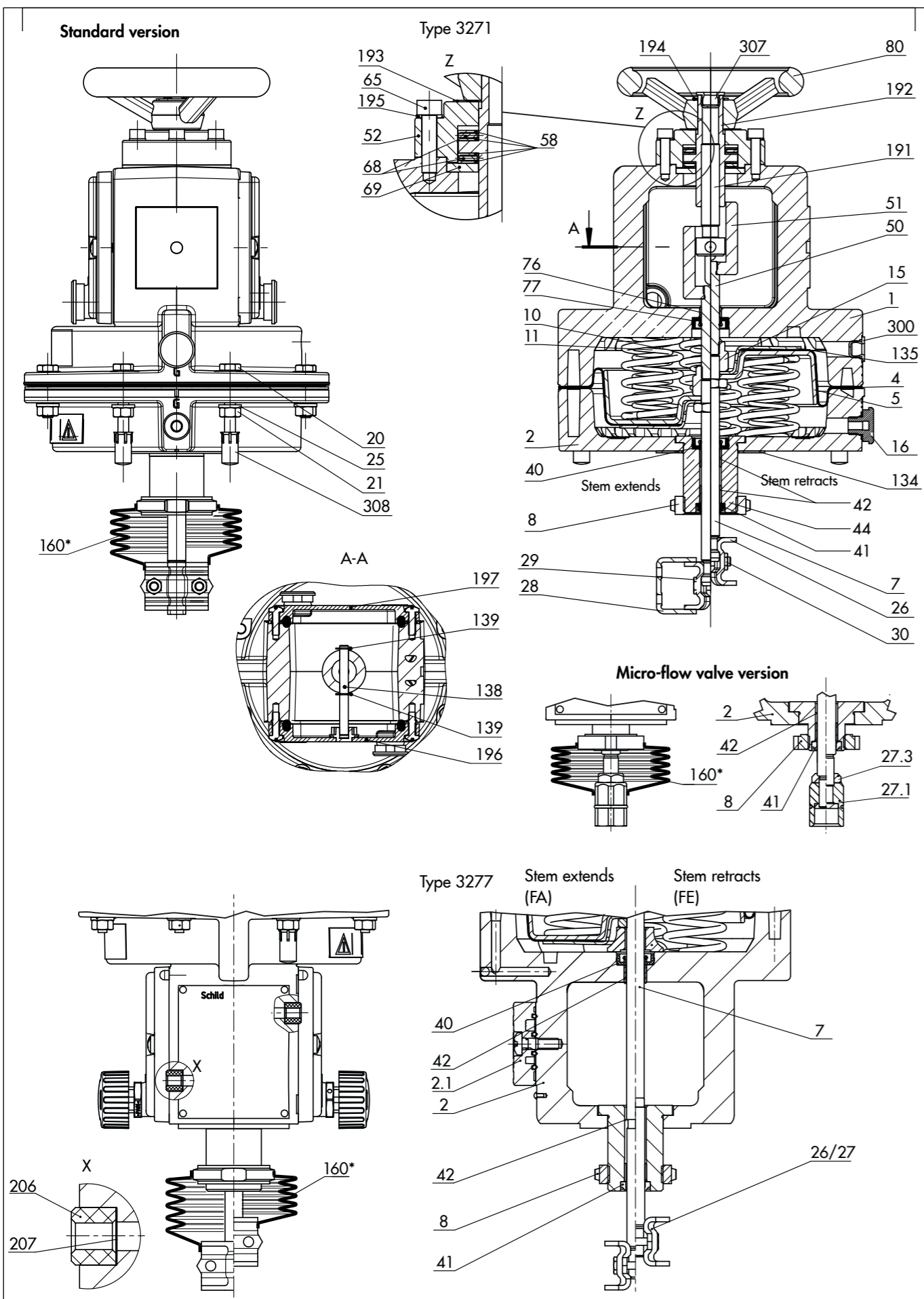
Print form

Clear form

Edition November 2020

Spare Parts List

EL 8310-1 EN



Spare part no.	Qty.	Filled in by SAM-SON: material no.
1		
2		
2.1		
<b>4</b>		
5		
7		
8		
10		
11		
<b>15</b>		
16		
20		
21		
25		
26		
27		
27.1		
27.3		
28		
29		
30		
<b>40</b>		
<b>41</b>		
<b>42</b>		
44		
50		
51		
52		
<b>58</b>		
65		
<b>68</b>		
69		
76		
77		
80		

Spare part no.	Qty.	Filled in by SAM-SON: material no.
134		
135		
138		
139		
<b>160*</b>		
191		
192		
193		
194		
195		
196		
197		
<b>206</b>		
<b>207</b>		
300		
307		
308		

1) Type 3277 only  
2) Version for micro-flow valve only

Specifications subject to change without notice

---