

SED Flow Control GmbH



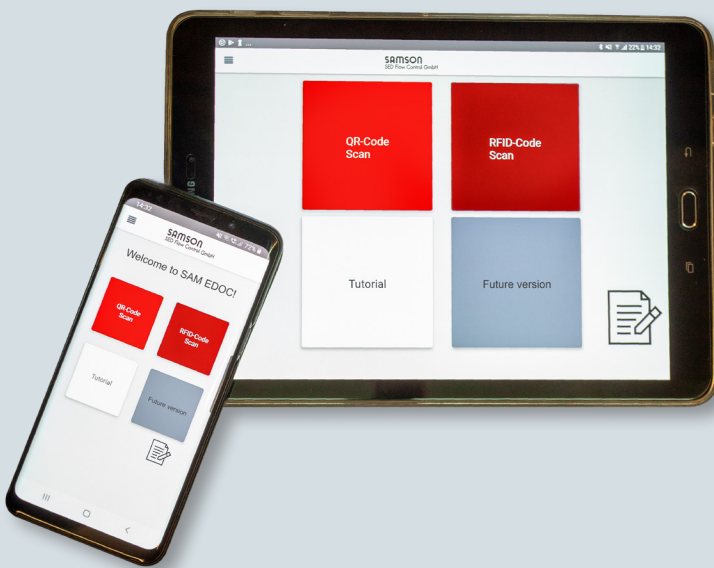
**SAM EDOC®**  
IoT in Process Industry

**SMART IN FLOW CONTROL**



SAM EDOC® is the electronic document management system for products by SED Flow Control GmbH. The system helps you identify SED valves installed in your plant and instantly provides you with the relevant documentation for these products. Simply scan the QR code to download the app on your mobile device (iOS or Android).

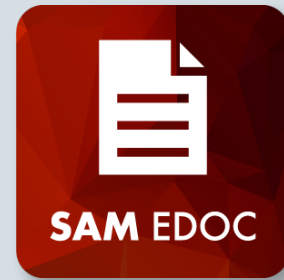
Use the free app on your mobile device to quickly access data sheets, operating instructions, certificates, declarations of conformity and assembly instructions.



Simply scan the QR code on the valve body or actuator. Alternatively, read the RFID chip integrated into the diaphragm.

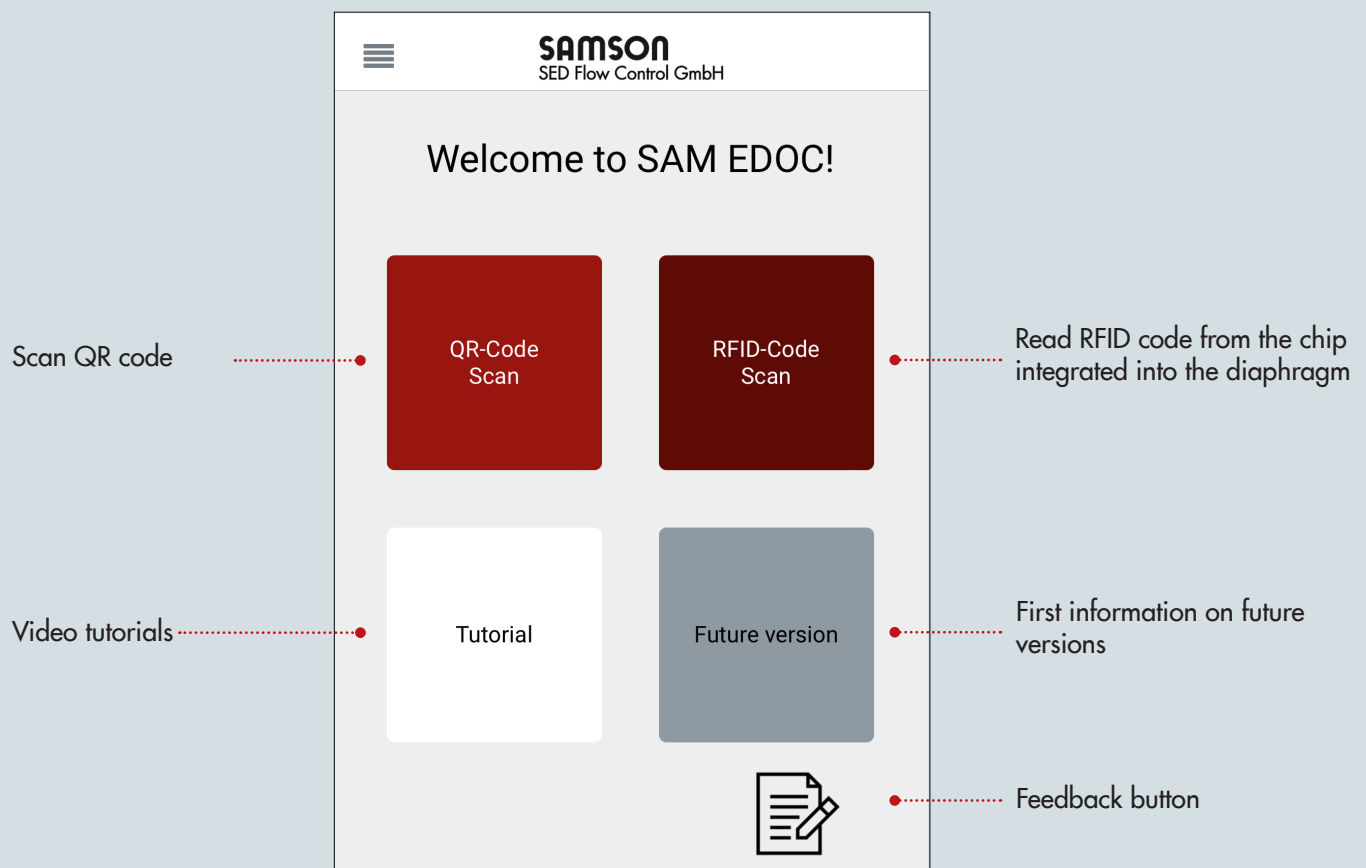
## Advantages:

- Fast identification of components
- Permanent access to important documentation
- Quick availability at all times
- Easy operation
- Clear assignment of documents and certificates



# SAM EDOC®: STEP BY STEP

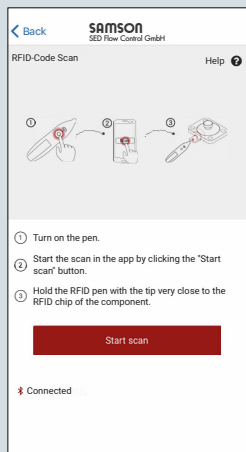
## Overview of functions



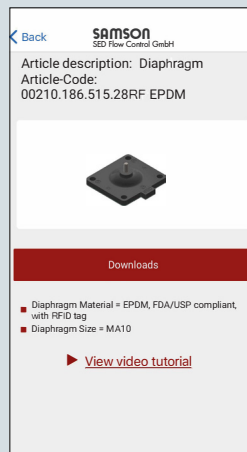
For questions or further information, simply call or e-mail us.

## Step-by-step instructions:

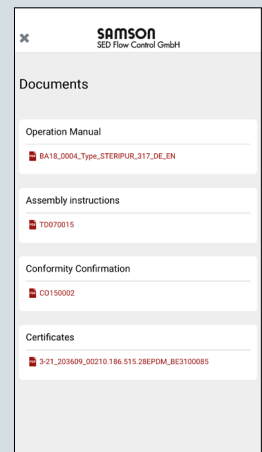
- Open the app
- Select 'QR-Code Scan' or 'RFID-Code Scan'
- Scan the QR code on a component to access information
- Use a suitable RFID reader to scan the diaphragm's RFID chip
- Select the information that you need from the listed options



Scan RFID code



Check product features



Select a document

## Requirements to use SAM EDOC®:

- Smartphone or tablet running under Android or iOS
- App downloaded from the Apple App Store or Google Play Store
- Actuator and valve body with QR code
- Diaphragm with RFID chip
- SAM EDOC® enabled RFID reader (available from SED)





# INTELLIGENT, COMPREHENSIVE SOLUTIONS



## Our quality standards

The quality of our products is the key to achieving customer satisfaction and to ensuring the long-term existence of our company and our customers' operations.

Our equipment and processes are extremely reliable and comply with major standards and regulations – beyond the minimum requirements.

Our state-of-the-art valves meet FDA, EC 1935/2004, 3A, ASME BPE and USP requirements. As a result, we can guarantee the highest purity level for your process and also the highest quality level for your products.

## Tailor-made solutions

We can count on our long experience in process automation and offer you solutions from a single source that are perfectly tailored to the specific requirements of your application.

Whether it's hygienic, aseptic or industrial service, our proven equipment and services support you throughout the entire production process.

Our valves are successfully used in many pharmaceutical applications, such as fermentation or the treatment of pharmaceutical water as well as when mixing, distributing, dosing and filling the finished product.

## State-of-the-art process engineering

Our product range includes aseptic diaphragm and seat valves to handle process media in the main process. Additionally, we manufacture diaphragm, seat, angle-seated, ball, butterfly and rotary plug valves to supply the plant with the required process utilities.

Compact electric, pneumatic and hand-operated actuators made of different materials are available to meet the requirements that apply in pharmaceutical environments.

A wide range of valve accessories, such as positioners, transmitters, compact controllers, limit switches, solenoid valves, travel limiters and supply pressure regulators, rounds off our product range.

# SAMSON AT A GLANCE



## STAFF

- Worldwide 4,500
- Europe 3,600
- Asia 600
- Americas 200
- Frankfurt am Main, Germany 1,900

## INDUSTRIES AND APPLICATIONS

- Chemicals and petrochemicals
- Food and beverages
- Pharmaceuticals and biotechnology
- Oil and gas
- Liquefied Natural Gas (LNG)
- Marine equipment
- Power and energy
- Industrial gases
- Cryogenic applications
- District energy and building automation
- Metallurgy and mining
- Pulp and paper
- Water technology
- Other industries

## PRODUCTS

- Valves
- Self-operated regulators
- Actuators
- Positioners and valve accessories
- Signal converters
- Controllers and automation systems
- Sensors and thermostats
- Digital solutions

## SALES SITES

- More than 60 subsidiaries  
in over 40 countries
- More than 200 representatives

## PRODUCTION SITES

- SAMSON Germany, Frankfurt, established 1916  
Total plot and production area: 150,000 m<sup>2</sup>
- SAMSON France, Lyon, established 1962  
Total plot and production area: 23,400 m<sup>2</sup>
- SAMSON Turkey, Istanbul, established 1984  
Total plot and production area: 11,100 m<sup>2</sup>
- SAMSON USA, Baytown, TX, established 1992  
Total plot and production area: 20,000 m<sup>2</sup>
- SAMSON China, Beijing, established 1998  
Total plot and production area: 47,000 m<sup>2</sup>
- SAMSON India, Pune district, established 1999  
Total plot and production area: 28,000 m<sup>2</sup>
- SAMSON AIR TORQUE, Bergamo, Italy  
Total plot and production area: 27,000 m<sup>2</sup>
- SAMSON CERA SYSTEM, Hermsdorf, Germany  
Total plot and production area: 14,700 m<sup>2</sup>
- SAMSON KT-ELEKTRONIK, Berlin, Germany  
Total plot and production area: 1,100 m<sup>2</sup>
- SAMSON LEUSCH, Neuss, Germany  
Total plot and production area: 18,400 m<sup>2</sup>
- SAMSON PFEIFFER, Kempen, Germany  
Total plot and production area: 20,300 m<sup>2</sup>
- SAMSON RINGO, Zaragoza, Spain  
Total plot and production area: 19,000 m<sup>2</sup>
- SAMSON SED, Bad Rappenau, Germany  
Total plot and production area: 10,400 m<sup>2</sup>
- SAMSON STARLINE, Bergamo, Italy  
Total plot and production area: 27,000 m<sup>2</sup>
- SAMSON VDH PRODUCTS, Netherlands  
Total plot and production area: 12,000 m<sup>2</sup>
- SAMSON VETEC, Speyer, Germany  
Total plot and production area: 27,100 m<sup>2</sup>

## SED Flow Control GmbH

Am Schafbaum 2 · 74906 Bad Rappenau, Germany  
Phone: +49 7264 921-0 · Fax: +49 7264 921-21  
E-mail: [info-sed-de@samsongroup.com](mailto:info-sed-de@samsongroup.com)  
Internet: [sed.samsongroup.com](http://sed.samsongroup.com)